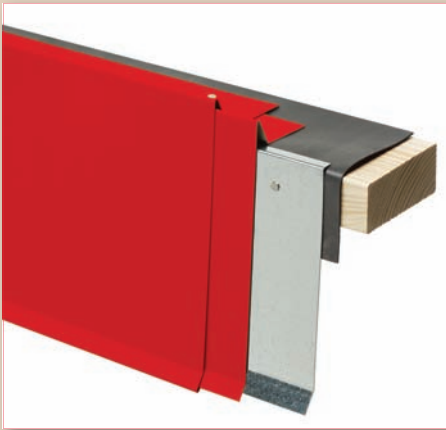
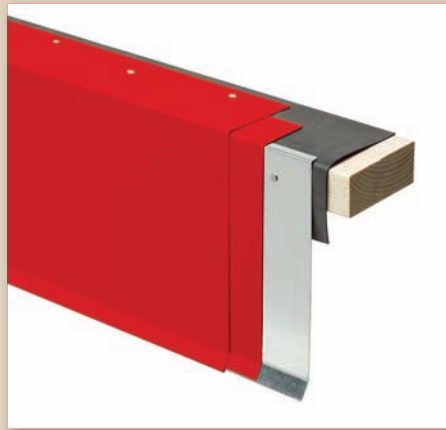


# UNA-Edge™ Metal Edge System



**UNA-Edge™ GS**  
**GravelStop System**



**UNA-Edge™ DE**  
**DripEdge System**



**UNA-Edge™ CO**  
**Coping System**

## Features

- ANSI/SPRI ES-1 Code Compliant up to 90 mph and 250' high buildings
- Three systems available: GravelStop; DripEdge; and Coping
- Shipped as a full system: cleats, splices and fasteners included
- Available in aluminum or galvanized (G-90) steel
- Available in over 30 standard colors
- Simple and straightforward architectural sheet metal detailing, with no spring clips or extruded components, resulting in easy to make field miters for drip edge and gravelstop
- FM 4435 tested
- Eligible for inclusion in Red Shield™ warranty roof with coverage of up to 20 years
- Prefabricated factory miter corners available for coping and gravelstop
- Installation and CAD details plus three part CSI specifications online

## Benefits

- Delivers the assurance and security inherent in a Firestone-tested edge metal system
- Assured code compliance for your edge metal systems
- Simple design helps save installation time and labor costs
- Single-source supplier for all necessary components, from systems to fasteners to warranty

**Firestone**  
BUILDING PRODUCTS

**NOBODY COVERS YOU BETTER™**

# Firestone Quality

The Firestone name is synonymous with quality, innovation and leadership. Through annual investments in research and development, we remain at the forefront of advances in roofing technology.

## Firestone UNA-Edge™ System



The straightforward design of each Firestone UNA-Edge system (with no cumbersome spring clips or extruded components) adds up to simple installation, saving both time and money.

**Firestone**  
BUILDING PRODUCTS

**NOBODY COVERS YOU BETTER™**

Firestone Building Products

250 West 96th St., Indianapolis, IN 46260

Corporate Office: 1-800-428-4442 • 317-575-7000 • Fax: 317-575-7100

[www.firestonebpco.com](http://www.firestonebpco.com)

### International Offices:

**Firestone Building Products Canada**  
2835 Argentina Road, Unit # 2  
Mississauga, ON L5N 8G6  
800-428-4442 ext 77663  
Fax: 887-666-3022  
[www.firestonebpco.ca](http://www.firestonebpco.ca)

**Firestone Building Products Europe**  
Hermesstraat 2C  
1930 Zaventem, Brussels, Belgium  
+32 2 7114450  
Fax: +32 2 7212718  
[www.firestonebpco.com](http://www.firestonebpco.com)

**Firestone Building Products Latin America**  
8200 NW 52 Terrace, Suite 107  
Miami, FL 33166  
305-471-0117  
Fax: 305-471-0377  
[www.firestonebpco.ca](http://www.firestonebpco.ca)

## Firestone UNA-Edge™ Metal Edge System Product Information

- Consists of three edge securement systems: UNA-Edge GS (GravelStop); UNA-Edge DE (DripEdge); and UNA-Edge CO (Coping)
- UNA-Edge systems are factory-fabricated in 10' lengths and all components are shipped together

## UNA-Edge™ System

### Components:

- Cover: 24ga or 22ga galvanized steel with KYNAR® paint finish\* or .040" or .050" aluminum with mill finish, coil-anodized finish or KYNAR® paint finish\* (see Color Selection Guide)  
\*Up to 20 year paint finish warranty available
- Cleat: 20ga galvanized steel self-indexing continuous cleat for drip edge, gravelstop, and outside coping face
- Splices: 6" wide concealed splices, provided at a rate of one per 10' section, with one extra splice per every 100 linear feet (or fraction thereof)
- Fasteners suitable for attachment to a standard 2x preinstalled mailer: Type 304 stainless steel 5D annular ring 1¾" nails (for all systems); Screws – ¼" hex head 9 x 1½" T-17 stainless steel screws with sealing washer (for Coping systems only)
- Gravelstop and drip edge finish off with simple strip-in

### Optional Components:

- 90 degree inside coping and gravelstop corners
- 90 degree outside coping and gravelstop corners
- Custom coping and gravelstop miters



This green product printed on recycled paper.